



Pricing Structure

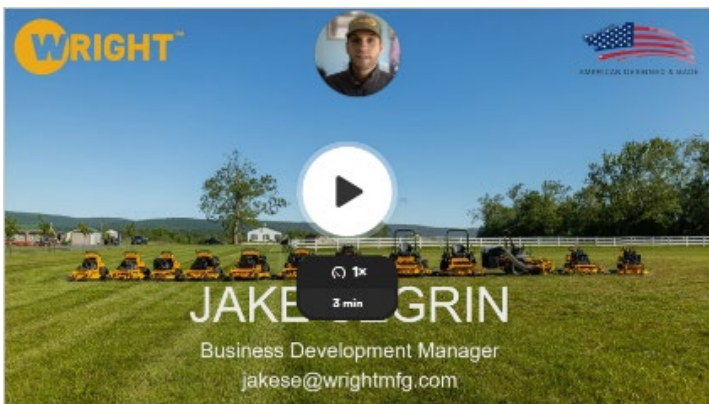
Sourcewell Member Pricing	Volume Discount 1	Volume Discount 2
22% off MSRP	23% off MSRP	24% off MSRP
Single PO's where MSRP is: \$1 - \$100,000	Single PO's where MSRP is: \$100,001 - \$199,999	Single PO's where MSRP is: \$200,000+
Applicable Models		
<ul style="list-style-type: none"> - Commercial Stand-On Mowers - Commercial Zero-Turn Rider Mowers - Commercial Wide-Area Walk-Behind Mowers - Autonomous Commercial Stand-On Mowers - Mower Accessories: full mulch kit, 3-bag grass collection system and Velke Sulky 		

Procurement Process

Agencies are able to work directly with their local Wright dealer to facilitate a transaction. For agencies without an existing relationship with a local Wright dealer, the agency may work directly with Wright to receive a Sourcewell Quote Assistance Form. Completed forms will be directed to the agencies local Wright dealer for proper fulfillment.

Wright Contact:

Jake Segrin | Business Development Manager | jakese@wrightmfg.com



Scan the QR code or [click the link here](#) to learn more about ***How to Buy Sourcewell and Wright***


4600 WEDGEWOOD BLVD STE X
FREDERICK MD 21703-7167


301.360.9810


Service@wrightmfg.com
Sales@wrightmfg.com


wrightmfg.com



Sourcewell Quote Assistance Tool Cont.

Sourcewell Member: Please reference below for pricing verification as found on Wright's website and full dealer locator.

SOURCEWELL AGENCY REFERENCE MATERIAL

CLICK THE LINK OR SCAN THE QR CODE BELOW TO ACCESS REFERENCE MATERIAL

Wright Dealer Locator:

Web location to find your local Wright Commercial Mower Dealer

<https://www.wrightmfg.com/find-dealer/>



Wright Pricing Verification:

Location on the web to confirm publicly posted Wright pricing and ensure quote accuracy for audit purposes.

<https://www.wrightmfg.com/pricing/>



WRIGHT DEALER REFERENCE MATERIAL

Wright Dealer: This quote assistance tool was created by the Wright sales team to assist the Sourcewell agency in receiving their quote that aligns with the outlined Grounds Maintenance contract 112624-WRT that Wright was awarded. Please reference WIN for a full detailed outline of the program via **Sales Memo 0015 - Wright Sourcewell Contract**. Should you have any questions, please feel free to reach out directly to Wright's Business Development Manager Jake Segrin: jakese@wrightmfg.com. The sales memo will show how to register any Sourcewell document in order to receive your full dealer rebate. Please note that process will require you to upload a copy of the invoice where the line item dollar amount for the whole good or applicable accessory match what is quoted on this worksheet and displays the Sourcewell agency member number as found on the reverse side of this work sheet.